

The "Compagnie du Mont-Blanc" group manages and runs the ski areas and tourist attractions of the Chamonix Valley and as of the winter season 2015-16, the adjacent Megève ski resort. The territorial strategy is to promote the "Mont Blanc Region" with a single pass, MONT BLANC Unlimited in the winter and the MONT BLANC MultiPass in the summer; opening the way to this mythical playground and unique experience at the foot of Mont Blanc.

Further information on:  
[www.montblancnaturalresort.com](http://www.montblancnaturalresort.com)



CHAMONIX / LES HOUCHES-SAINT-GERVAIS / MEGÈVE

## MONT BLANC Multipass\*

Visit in total freedom!

- ✓ a free session at the immersive 4D cinema (1 to 21 day pass)
- ✓ easy access to the TER train from Le Fayet to Vallorcine (1 to 21 day pass)
- ✓ access to the Skyway
- ✓ a preferential rate at the Cinéma Vox in Chamonix (1 to 21 day pass)
- ✓ access to the Courmayeur cable car and the Plan Chécrouit high altitude pool (from 2 day pass)
- ✓ a special rate for the little tourist train in Chamonix
- ✓ free access to the Chamonix valley shuttles and buses in the Chamonix valley

\*Excluding Panoramic Mont-Blanc \*\*Montenvers Train: access subject to a commercial agreement with the Montenvers Train departmental authority



Find all the information you need on our professional website

[www.montblancnaturalresort.pro/](http://www.montblancnaturalresort.pro/)

- € Our rates
- 🕒 Our opening times
- 📖 Our brochures
- 📍 Our maps
- 🗺 Presentations of the areas and excursion sites
- 👥 Pass and ticketing sale for group of 20 people or more

### SALES DEPARTMENT CONTACT

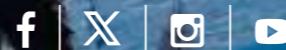
☎ +33 (0)4 50 53 14 14  
 ✉ [sales@compagniedumontblanc.fr](mailto:sales@compagniedumontblanc.fr)



ACCESS THE PROFESSIONAL WEBSITE



DOWNLOAD THE WINTER VERSION



[www.montblancnaturalresort.com](http://www.montblancnaturalresort.com)



BALME (LE TOUR - VALLORCINE) | LES GRANDS MONTETS  
 BRÉVENT - FLÉGÈRE | TÉLÉSIÈGE DES BOSSONS | MONTENVERS - MER DE GLACE  
 AIGUILLE DU MIDI | TRAMWAY DU MONT-BLANC  
 LES HOUCHES - SAINT-GERVAIS | MEGÈVE | SKYWAY MONTE BIANCO

[montblancnaturalresort.pro](http://montblancnaturalresort.pro)







## 6 EXCEPTIONALS AREAS



**2525 m** ▲  
**BRÉVENT**  
CHAMONIX MONT-BLANC  
Discover the magic facing Mont-Blanc !

With its southern exposure, overlooking the Mont-Blanc Range, the Brevent is the ideal departure point for classic hikings and easy rambles to various mountain lakes (Lac du Brévent, Lac Cornu...).



**2385 m** ▲  
**FLÉGÈRE**  
CHAMONIX MONT-BLANC  
Enjoy the mountains !

From the Index, admire the view of Mer de Glace, Argentière and le Tour glaciers. Experience the joy of south-facing site! Discover the Via ferrata des Evettes in a stunning setting, also discover some beautiful lakes (Lac Blanc, Lac des Chéserys...) and hikes in the Aiguilles Rouges wildlife park.



**2134 m** ▲  
**GRANDS MONTETS**  
ARGENTIÈRE  
A whole new universe to discover !

Built in 1963, this cable car located in Argentière (1252 m) allows to reach the 3275 m of the Grands Montets, under the incredible Aiguille Verte. With the fire that occurred in September 2018 on the intermediate station of Lognan (1972 m), the Argentière > Lognan and Lognan > Grands Montets cable cars are closed. Access to the ski area is via the Plan Joran gondola (2134 m).

**Grands Montets Project**  
But by 2026, everyone will be able to enjoy the magic of these great natural spaces again, thanks to the stations designed by the architect Renzo Piano. Access to the summit of the «Grands» will be via its **3S cable car**, which embodies comfort and safety at the highest level. Discover the alpine pastures of Lognan and the seracs of the Argentière glacier within easy reach.



**2270 m** ▲  
**BALME**  
LE TOUR - VALLORCINE  
Panorama, rambles and mtb

Bordering Switzerland, this alpine domain takes advantage of vast high mountain pastures, among the last ones in the valley still being exploited. It is also the ideal domain for mountain biking.



**1900 m** ▲  
**LES HOUCHES**  
LES HOUCHES - SAINT-GERVAIS  
The spot for mountain-biking and hiking !

Two lifts to reach the St Gervais - Les Houches area, discover the many hiking and mountain-biking trails (DH & endurance) in a setting that is sure to take your breath away! For mountaineers, the Mont-Blanc's royal traverse and the approach to the north face of Bionnassay glacier run through Bellevue.



## NOT TO BE MISSED

**3442 m** ▲  
**LE PANORAMIC MONT-BLANC**  
Voyage au-dessus des glaciers !!!

An incredible journey above the glaciers to the Pointe Helbronner in Italy!!!  
\*Not included in the MONT BLANC MultiPass



**1881 m** ▲  
**MEGÈVE**  
ROCHEBRUNE MONT D'ARBOIS  
Culture, sport and relaxation!

Mythical, unique, magical! There is no shortage of adjectives to describe Megève! A symbol of the French art of living, this prestigious, authentic and audacious ski resort has always been a meeting place for avant-garde people since the 1920s. A unique destination! Megève is also sublime fir forests, magnificent alpine farms and sunny terraces with a breathtaking view of the Mont Blanc massif, the Fiz and the Aravis.

## 4 MUST-SEE SITES



**3842 m** ▲  
**AIGUILLE DU MIDI**  
CHAMONIX MONT-BLANC  
Experience the big thrill at the Aiguille du Midi !

Admire the Glacier des Bossons, the Mont-Blanc, the Aiguille Verte, the Drus and the Aiguilles de Chamonix. Then take a second cable-car which will take you up to an altitude of 3 777 m in just 10 minutes, above seracs and glaciers. Take the top lift and you will reach the peak at 3 842 m ! Welcome to the heart of the high mountains!

Visit the Step into the Void®. A glass structure suspended above the void at an altitude of 3842m.  
\*Free admission subject to opening restrictions and less busy periods.



**1913 m** ▲  
**MONTENVERS MER DE GLACE**  
CHAMONIX MONT-BLANC  
Enjoy history and glaciology !

The new 10-seat cable car at Montenvers offers simplified access to the Ice Cave. After a short ride, only 175 steps separate visitors from this unique glacier experience. This new setup improves accessibility and makes the site more attractive for your clients, with exceptional views of the surrounding landscape. More info on our website.\*



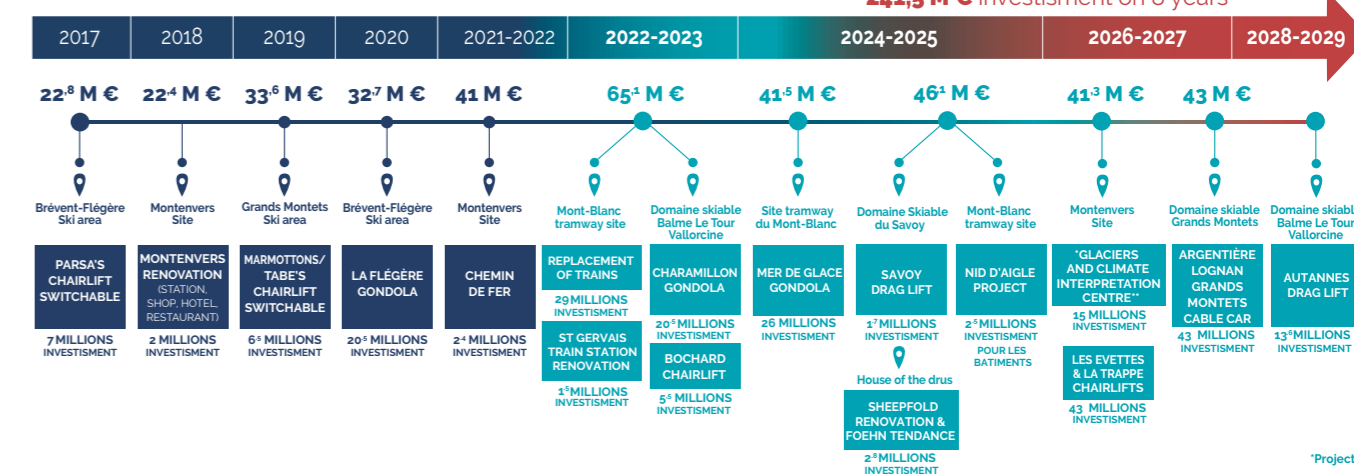
**2380 m** ▲  
**TRAMWAY DU MONT-BLANC**  
LE FAYET - SAINT-GERVAIS  
A timeless journey

The new Saint-Gervais station welcomes you. Come and discover its Bistrot gourmand and take advantage of its locker service. Come and re-discover the Tramway du Mont Blanc and enjoy a unique experience on board the new trains.

**Bellevue project (2025)**  
Renovation of Bellevue station (€2M)

**Nid d'Aigle project (after 2025)**  
€25M for the buildings and €5.5M for the track and engineering structures.

## INVESTISMENTS



\*Montenvers Train: access subject to a commercial agreement with the Montenvers Train departmental management company

\*\*Subject to CMB being selected as concessionaire by the Chamonix Mont-Blanc municipality.